

THE JOURNEY



Challenge 1: Route Planner

Before any journey, there must be a plan! When making new transport routes there are many things to consider.

Your task:

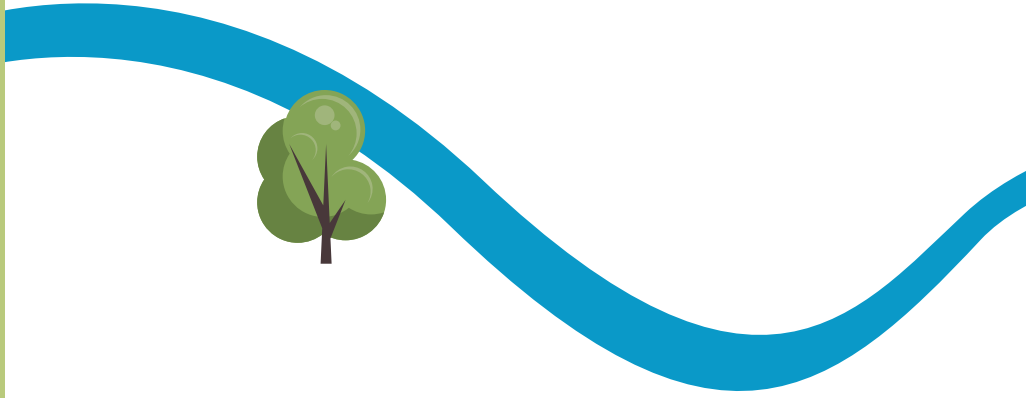
- Using the map, you must plan the route of a train from Appletree City to Bumblebee Town.
- There are different features that you might have to pass through. Read each feature card and decide which route you will choose.
- Your route must be as direct as possible but also mindful of the environment.
- Draw your track on the map and include the features you decide to build such as bridges, tunnels and stations.
- Use the space under the map to write down your reasons for 3 of the steps you took when planning your route.



There is a

Hill at grid reference 1,2

- You could go up and over the hill, but that would slow the train down.
- Digging a tunnel allows us to quickly cut through hills.
- When you build a tunnel, you have to move a lot of earth which will need to go somewhere else. You could use the earth to create banks along the side of the railway, which would reduce the noise of the trains and hide them from view.



There is a

River at grid reference 2,1

- You need to build a bridge to cross the water.
- A bridge would interrupt the landscape and some boats might not be able to pass underneath.
- A footbridge could also be built alongside the railway meaning that people could cross the river safely, where there was no crossing before.



There is a

Community of people living at grid reference 2,2

- Building the railway here will mean that some people will have to sell their houses and move.
- Building nearby to a community will be noisy and could upset the local homeowners, but they won't have to move to a new house.
- If a station is built here along the route, it will mean more jobs in the community, and better transport in the area.
- The people will be able to reach the cities quickly, but it will slow the overall journey down slightly with an extra stop.



There is a

Forest at grid reference 2,3

- Trees are important to our natural environment and are home to lots of different animals like squirrels and birds.
- Cutting down the trees and building the railway here would mean losing the wildlife's habitat and will increase air pollution locally.
- You could plant even more trees somewhere else nearby to make up for the ones you are cutting down and create new spaces for wildlife.
- Choosing to put the railway here will reduce disruption to the small community nearby, as the remaining trees will block the view of the railway.



There is a

Historical Ruin at grid reference 3,2

- This route would mean that the castle ruins would need to be removed or knocked down, and some people would be very sad to have lost part of their history.
- You could delay the building of the railway to allow time for archaeologists to excavate the area. Ruins from the site could be displayed in a museum.
- You could decide to leave the ruins where they are and re-route the track.