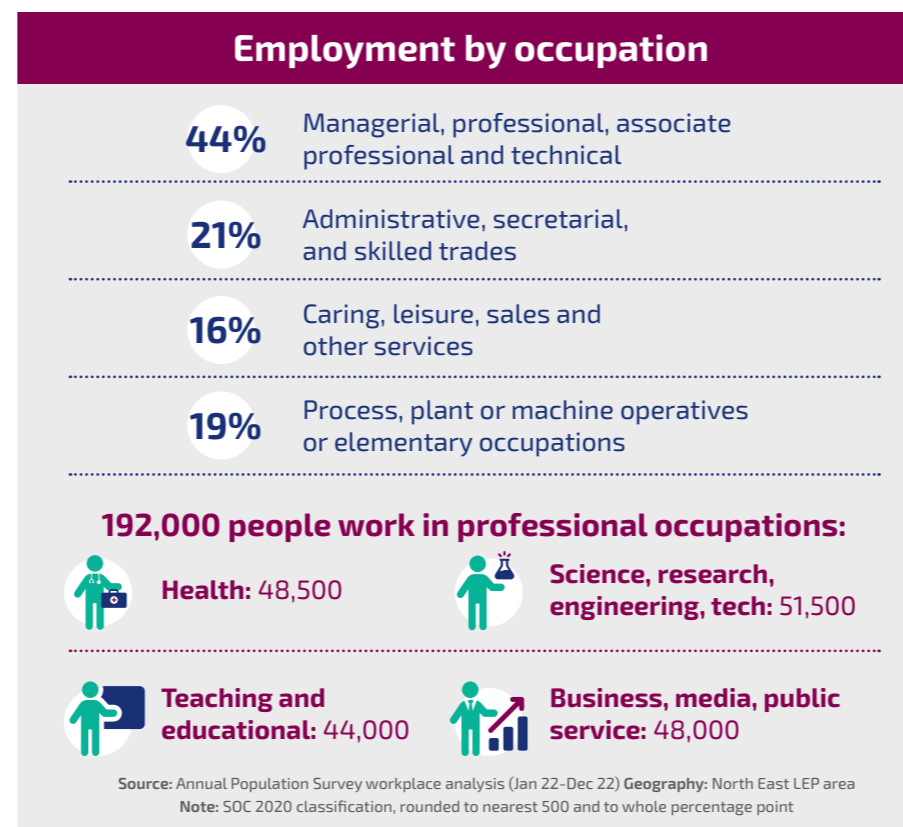
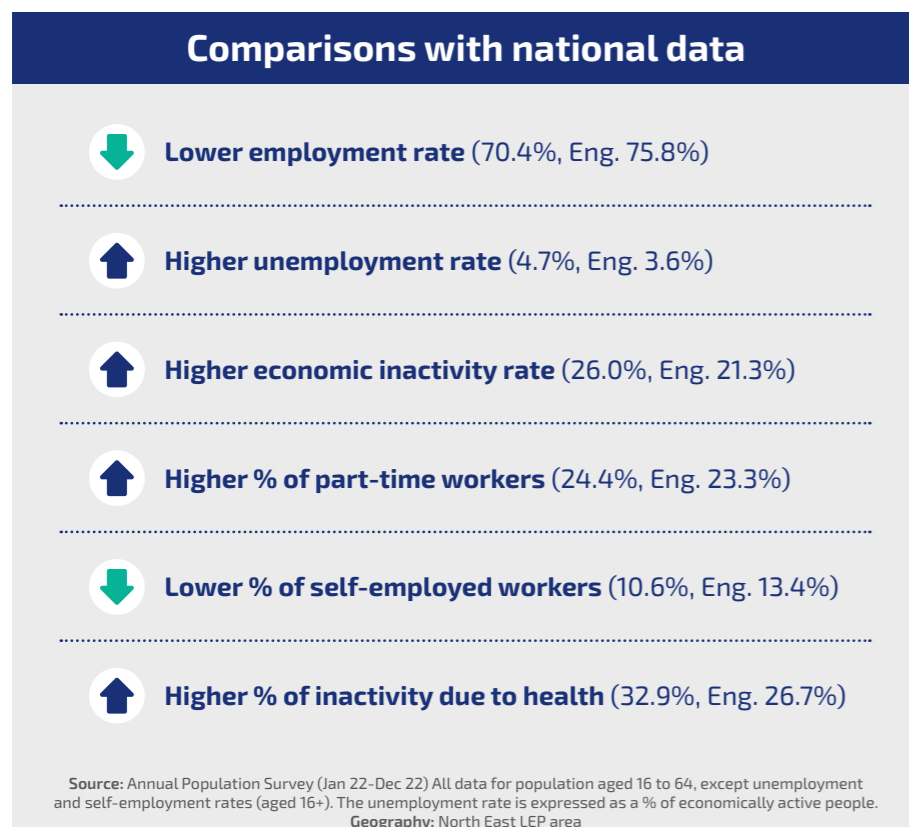
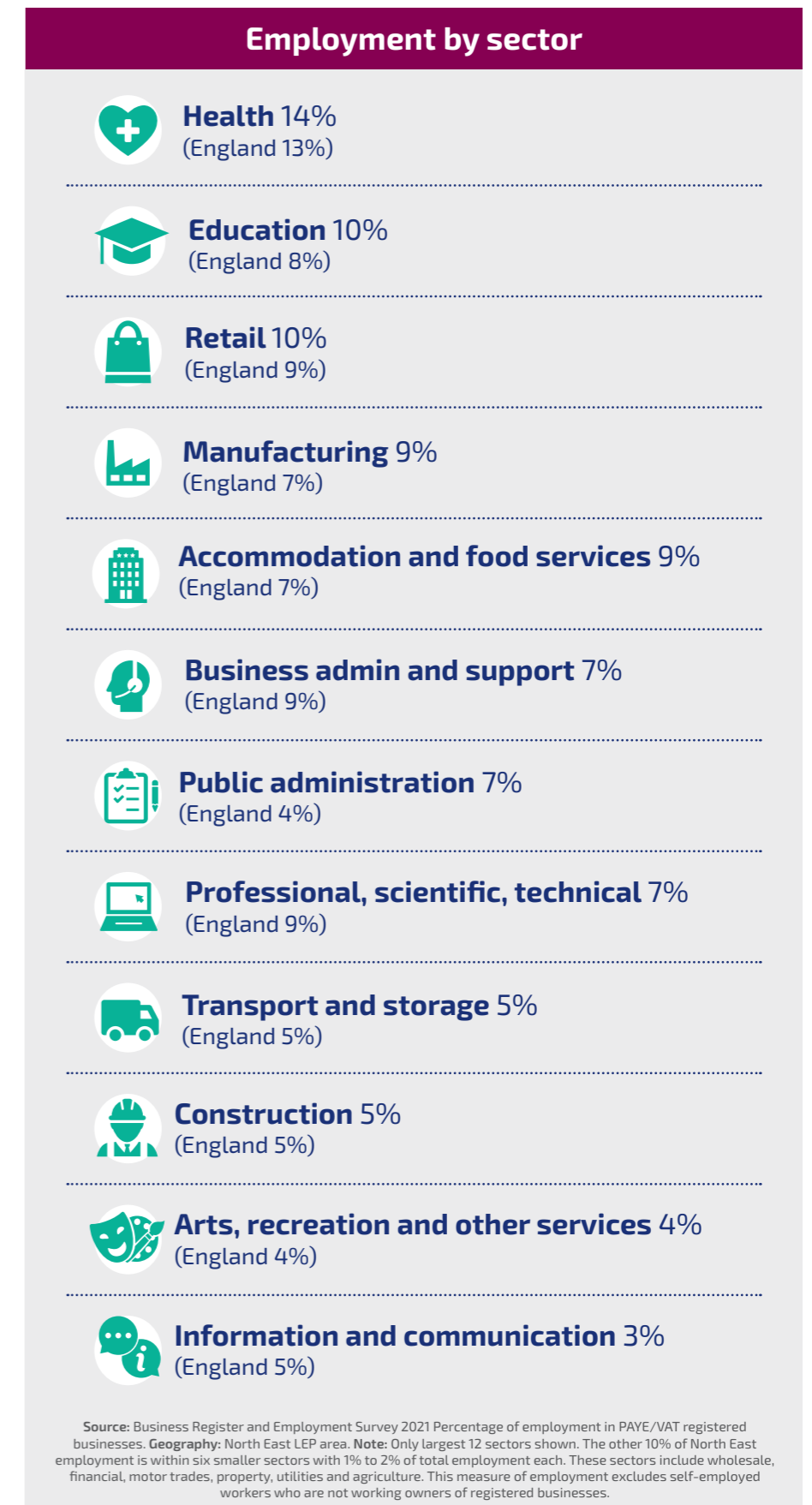
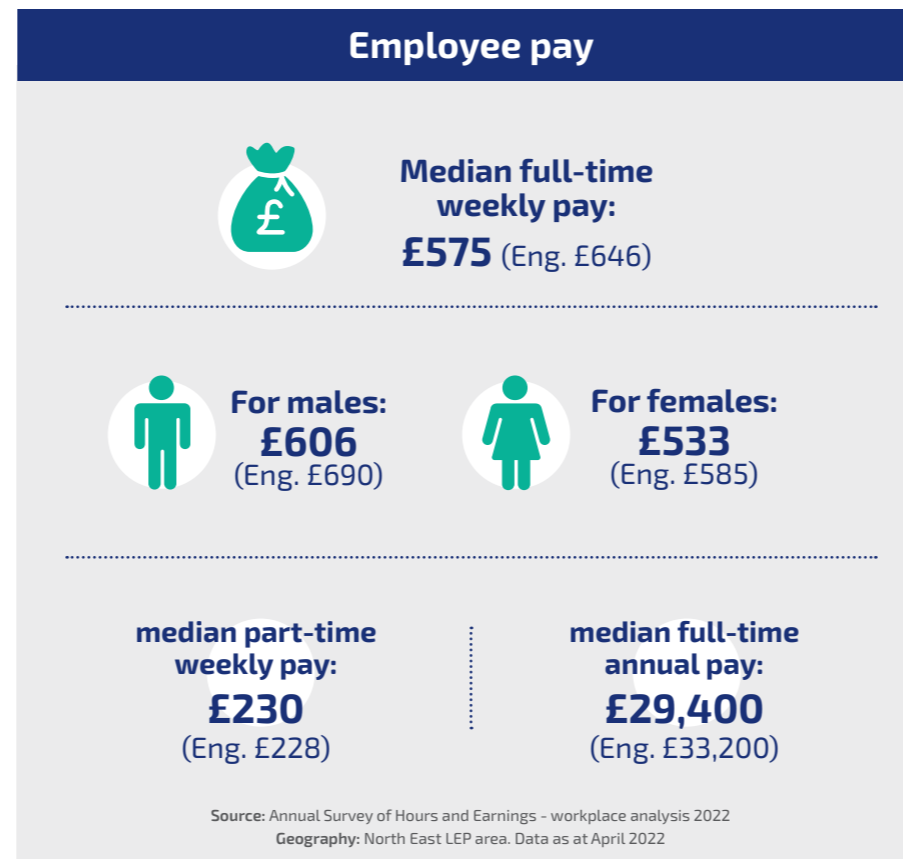
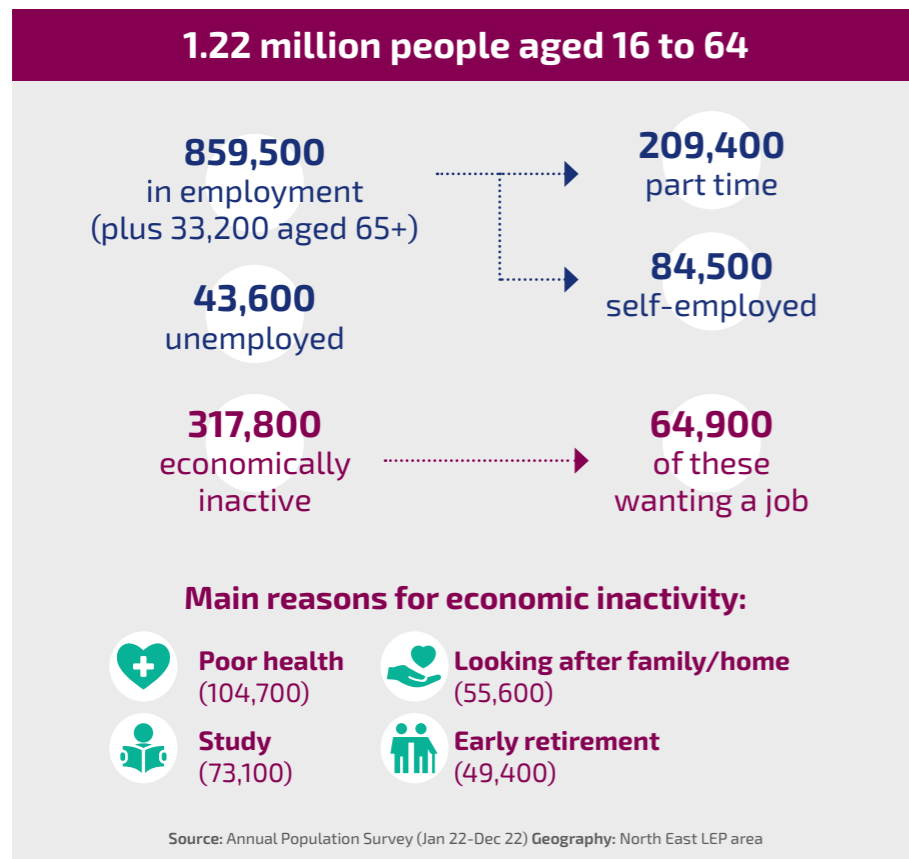


The North East labour market



Priority sectors

The North East LEP, the regional economic development body, has defined five areas of strategic importance:



These areas of strategic importance employ **150,000 people**. They include over **12,300 businesses**, about 3% more than in 2015.

A further **150,000** people work in three enabling services that support the growth of the North East economy:



Sources: Business Register Employment Survey 2021 and UK Business Count 2022. Data relates to VAT and PAYE registered businesses only, sector definitions based on 5 digit SIC codes selected by the North East LEP.

Future sector requirements

Half a million extra workers required by 2035

183,000 Health, education, and public administration

140,000 Retail, hospitality and transport

125,000 Business, arts, recreation, and personal services

23,000 Manufacturing **19,000** Construction

10,000 Other, inc. agriculture and utilities

Source: DfE Labour market and skills projections 2020 to 2035. Inc replacing retired workers
Geography: North East LEP area

Future occupational requirements



Half a million extra workers required by 2035:

44,000 Managers, directors and senior officials

135,000 Professional occupations

75,000 Associate professional and technical

49,000 Administrative and secretarial

26,000 Skilled trades occupations

49,000 Caring, leisure and other services

52,000 Sales and customer service

21,000 Process, plant and machine operatives

49,000 Elementary occupations

Source: DfE Labour market and skills projections 2020 to 2035. Inc replacing retired workers
Geography: North East LEP area

In-demand professions 2022

The following professions appeared most regularly in monthly snapshots of online North East job adverts during 2022:

Care assistants and nurses	ICT programmers	Primary school teachers	Electrical engineers, designers, and technicians
Sales managers and sellers	Personnel and labour experts	Accountants and lawyers	Hospitality and service workers
Customer service managers and staff	Production workers	Social workers	
	Educational support staff	Cleaners	

Source: ONS Labour demand volumes by profession and local authority 2017 to 2022. Geography: North East LEP area

North East job adverts

5,825 jobs advertised on the DWP find a job website (May 2023)

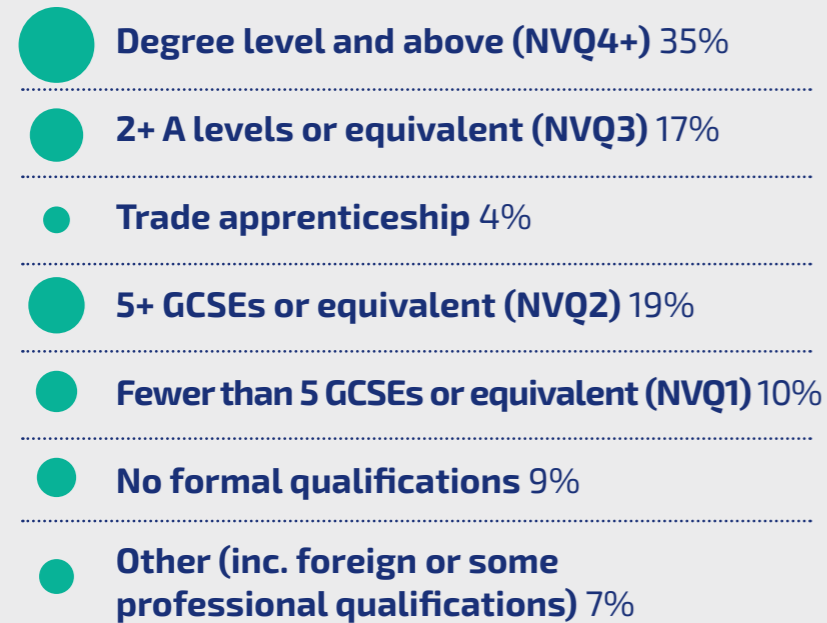
Sectors with most jobs available:

1. Healthcare and Nursing	29%
2. Teaching	11%
3. Social Work	7%
4. Administration	5%
5. Engineering	4%
6. Logistics and warehouse	4%
7. Accounting and finance	3%
8. Trade and Construction	3%
9. Hospitality and catering	3%
10. Domestic help and cleaning	2%

Source: DWP Find a Job website (26 May 2023). Geography: North East LEP area

Highest level of qualification

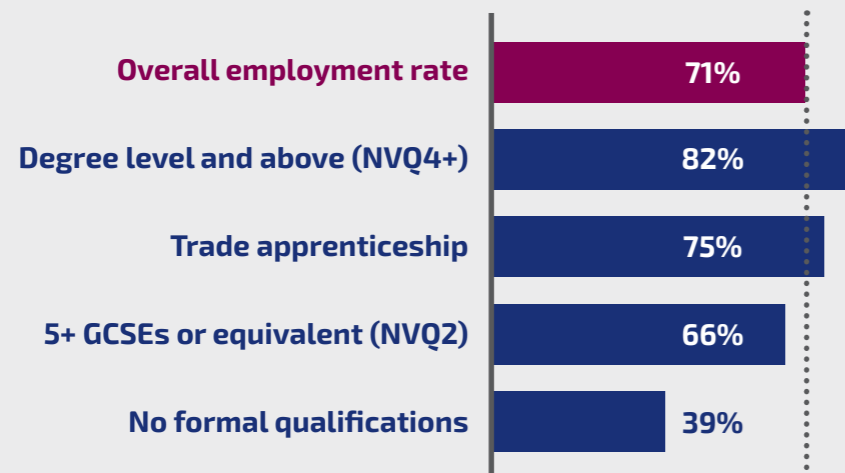
The 1.22 million people aged 16 to 64 have the following proportions by highest level of qualification:



Source: Annual Population Survey (Jan 21-Dec 21) All data for population aged 16 to 64. Rounded percentages used, which might not sum to 100% Geography: North East LEP area. Next update: tbc

Employment by qualification level

In 2021, the North East employment rate among 16 to 64 year olds varied by highest level of qualification:



Source: Annual Population Survey (Jan 21-Dec 21) All data for population aged 16 to 64. Geography: North East LEP area Note: Data only available for calendar years. Next update: tbc

Key stage 4 destinations

92.4% of North East pupils who completed key stage 4 in 2019/20 went into sustained education, employment and apprenticeships. (England 93.7%)

85.7% were in sustained education (England 88.3%)

3.3% were in sustained apprenticeships (England 2.7%)

3.4% were in sustained employment (England 2.6%)

Source: KS4 destination measures, DfE, 2020/21 (published Nov 2022), Geography: North East LEP area, sum of Local Authority level data Note: These headline statistics relate to pupils from state-funded mainstream schools.

Adult education and training destinations

72% of North East learners who achieved an education and training course as their highest learning aim in 2019/20 went into a sustained positive destination (England 70%)

55% went into employment only (England 45%)

9% went into a combination of employment and learning (England 12%)

9% went into learning only (England 13%)

Source: FE outcome based success measures, 2019/20 destinations, DfE, (published Nov 2022), next update due Oct 2023. Geography: North East LEP area. Note: To be counted as being sustained, learning or employment has to have been for six months. All percentages rounded to the nearest whole so they may not sum to published totals.

Apprenticeship outcomes

91% of North East learners who achieved an apprenticeship in 2019/20 went into a sustained positive destination. (England 92%)

72% went into employment only (England 75%)

17% went into a combination of employment and learning (England 15%)

2% went into learning only (England 2%)

There was little variation in the North East percentage going into a sustained positive destination by level of apprenticeship:



Source: FE outcome based success measures, 2019/20 destinations, DfE, (published Nov 22), next update due Oct 2023. Geography: North East LEP area. Note: To be counted as being sustained, learning or employment has to have been for six months. All percentages rounded to the nearest whole so they may not sum to published totals.

Higher Education graduate activities

About 15 months after course completion, among North East 2019/20 graduates:

68% were in employment or unpaid work alone (England 70%)

11% combined employment with further study (England 10%)

10% were in further study alone (England 9%)

6% were unemployed (England 6%)

Source: HESA, Graduate Outcomes Statistics: UK, 2019/20 (published Jul 2022) Geography: North East HE providers (LEP calculation) Note: Includes former full-time and part-time students and those who have undertaken significant interim study.